



Logon Screen Rotator

Table of Contents

[About](#)

[First Run](#)

[Interface](#)

[Settings](#)

About

Logon Screen Rotator is available for Windows Vista and 7; Windows XP support is imminent also. Logon Screen Rotator allows you to have a selection of individual images and folders (which will be monitored for images) from which the logon screen image will be changed to.

You are able to select an automation period of day, logon or computer lock. You are able to also have no automation and manually run Logon Screen Rotator each time you wish to change the Logon Screen.

The current version of Logon Screen Rotator is version 3.

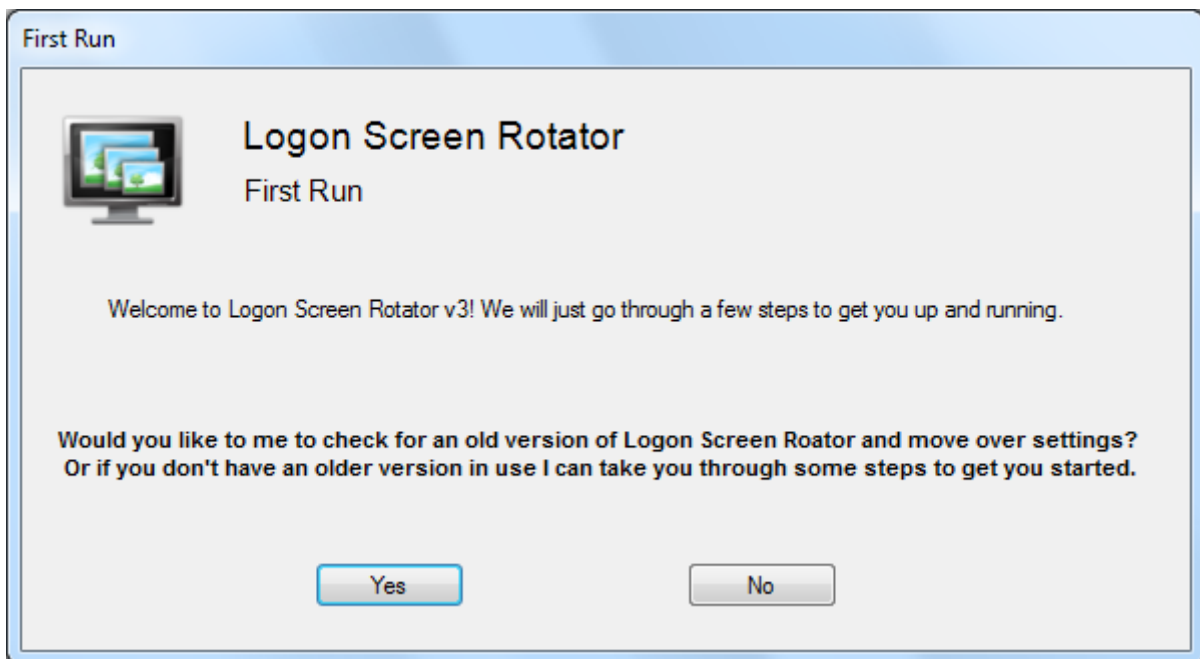
Logon Screen Rotator is developed by Luke Payne, <http://www.lukepaynesoftware.com>

First Run

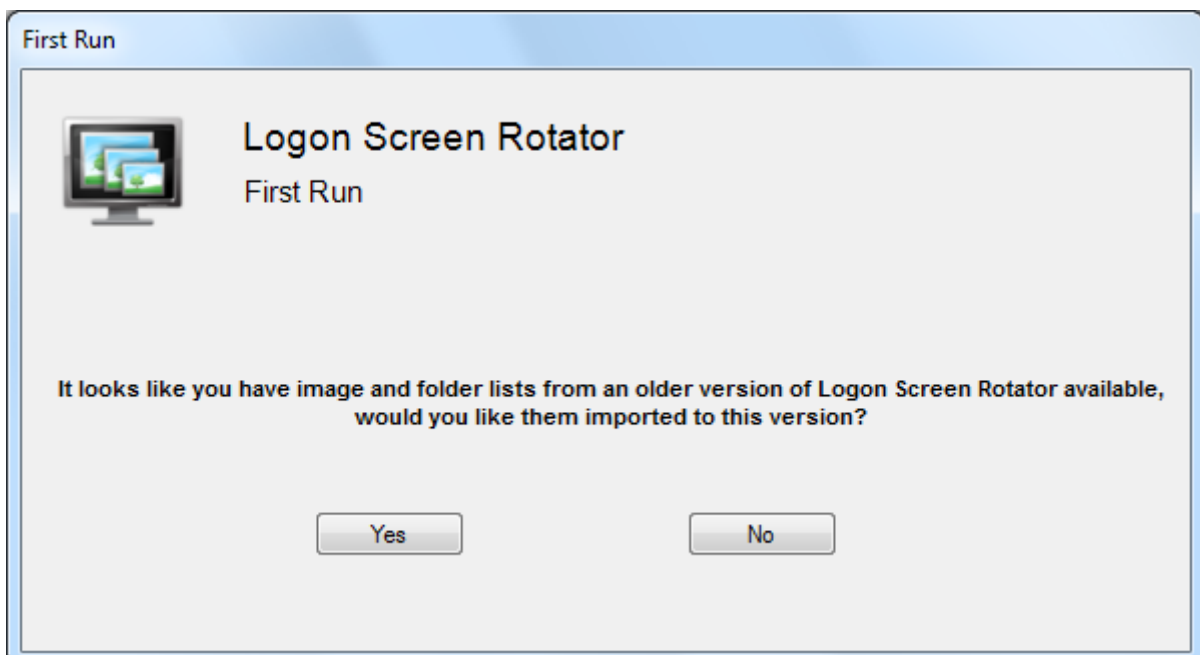
Upon first run of Logon Screen Rotator you will be presented with a wizard which will help you get started. The wizard will do the following things:

- Check if you are running a previous version of Logon Screen Rotator.
- Copy over and image or folder lists.
- Remove any old data.
- Import picture folders from your picture and wallpaper folders.

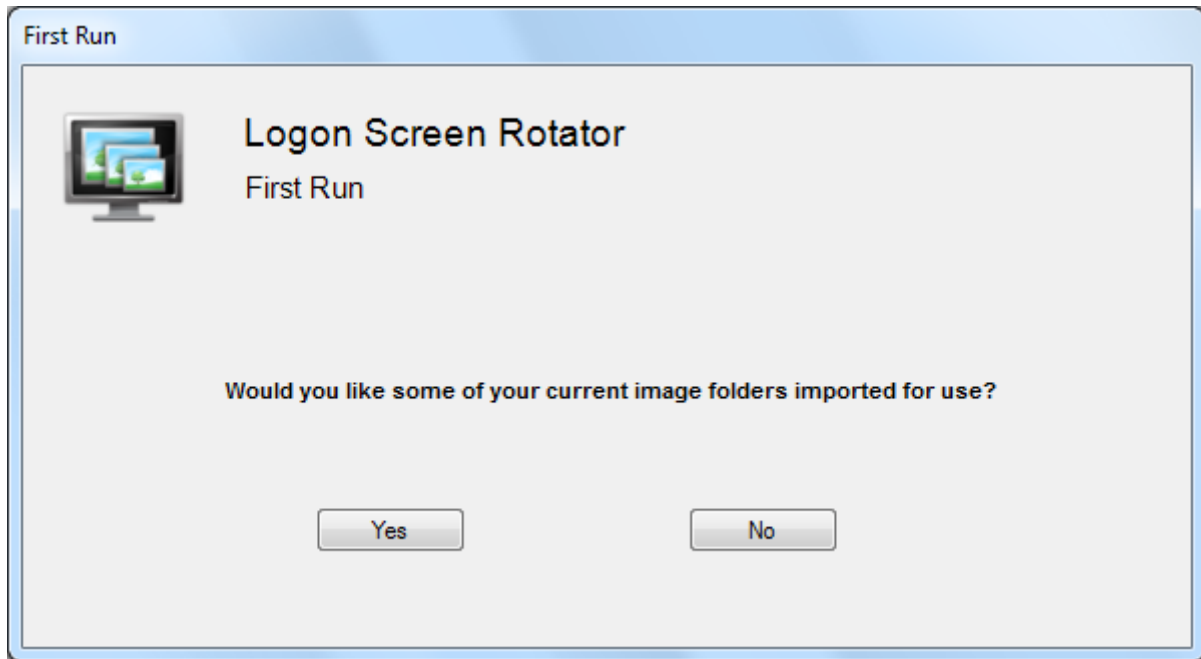
Step one: This is the initial screen you will on your first launch. From here you can either continue with the wizard or close out of it. If you choose to close out of the wizard you will be presented with the main Logon Screen Rotator screen.



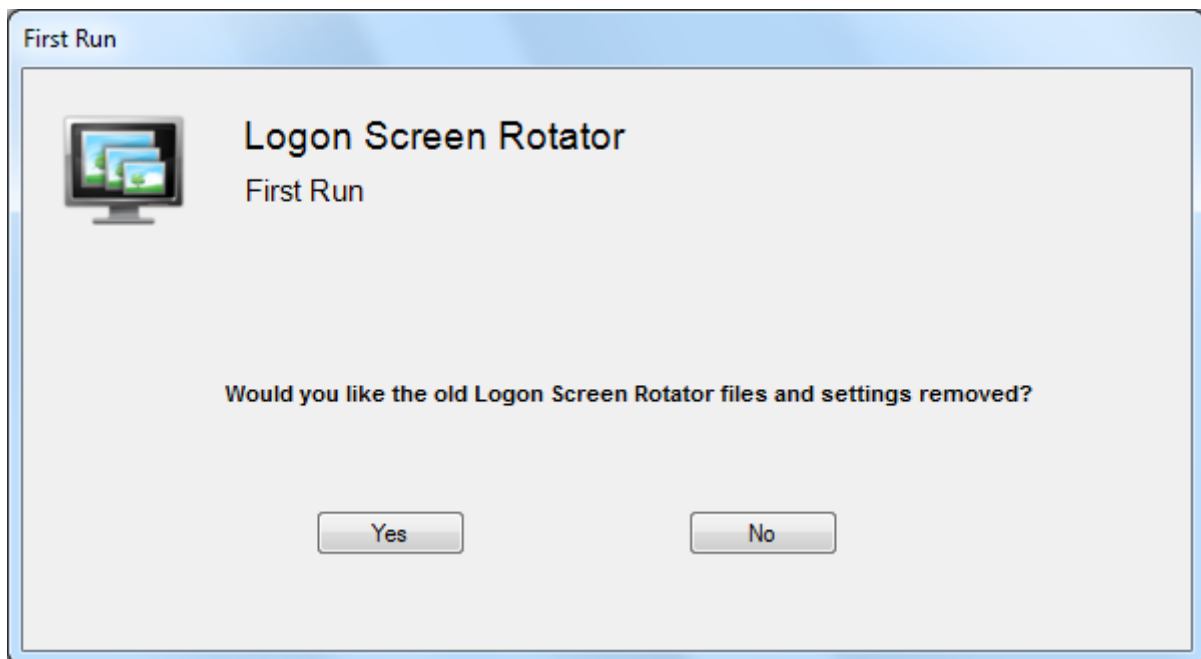
Step two: You will see this screen if you have any previous version in use. Here you have the option to import the image and folder lists from that previous version.



Step Three: From this screen you will have the option to allow Logon Screen Rotator to add in your current image directories.

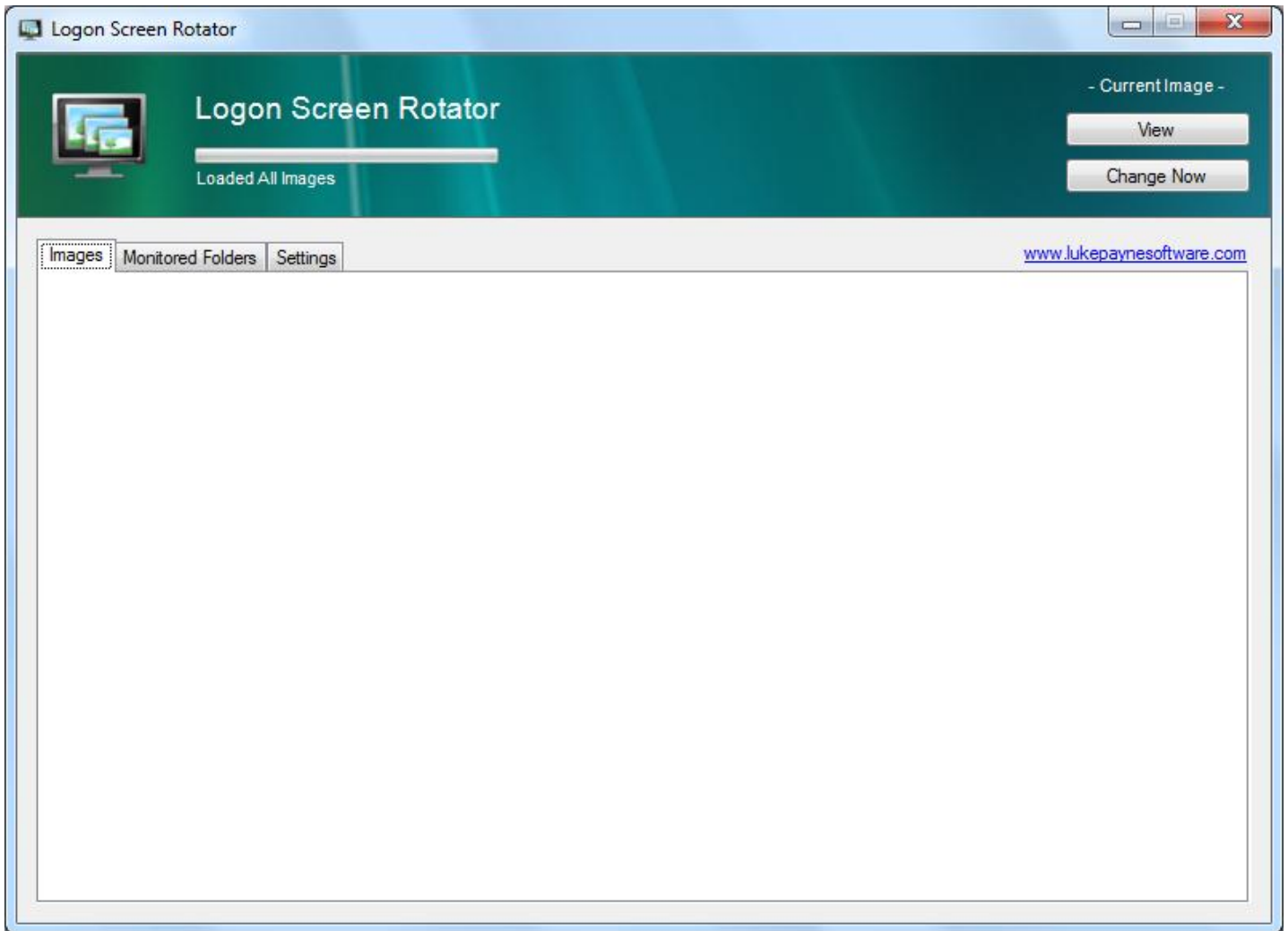


Step Four: The last screen will remove the old Logon Screen Rotator files and folders if they are present.



The Interface

Each time you manually load Logon Screen Rotator you will be presented with this screen:



The Top Panel:



Progress Bar: The progress bar will show the current progress of loading images when initially starting up Logon Screen Rotator.

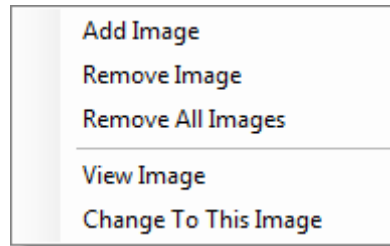
Status Text: The status text will show the current status of the application, be it loading images, removing folders or changing the logon screen.

View Current Screen: This will lock the workstation to allow you to view the current logon screen.

Change Logon Screen: Clicking this button will randomly change the logon screen.

Images Right-Click Menu:

When right-clicking on the images panel this menu will popup:



Add Image: Click this and you will be presented with an open image dialog, from which you can select one or multiple images to add.

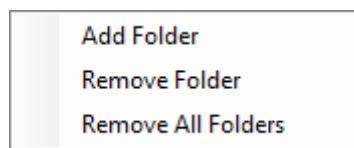
Remove Image: Which ever image is selected will be removed upon clicking this item.

Remove All Images: All images will be removed if you select this.

View Image: This will open the selected image in your default image viewer.

Change To This Image: This will change your logon screen to the currently selected image.

Monitored Folders Right-Click Menu:



Add Folder: Select this and you will be presented with an open directory dialog, where you can choose a folder location to add.

Remove Folder: Clicking this will remove the selected folder.

Remove All Folders: This will remove all folders.

Settings

Application

Size of Image Previews: x (restart to take effect)

Change Interval:

How To Use: www.lukepaynesoftware.com/lsr/howtouse

Wallpaper

Change desktop wallpaper

Every time I change logon screen or Just at the selected interval

Same image as logon screen or Random

Updates

Current Version: 3.0.029.1443

Latest Version: Unavailable

Applications:

- **Size of Image Previews:** Here you are able to select the size (in pixels) of the image previews displayed under the images tab. The maximum number you may select for each is 256. The first box is the width and the second the height. After changing these settings you must restart Logon Screen Rotator for the settings to take effect.
- **Change Interval:**
 - **None:** This is the default option. You select this option if you wish to have no automation in the logon screen changing process. If you select this you must run Logon Screen Rotator each time you wish to manually change the logon screen or introduce automation.
 - **Each Logon:** This option will change the logon screen each time you logon to your computer.
 - **Each Day:** When selecting this option another box will prompt you to enter the time of the day at which you would like the logon screen to change. This default time is 12:00. The time entry must be in 24 hour time.
 - **Each Computer Lock:** This option will change the logon screen each time you lock your computer.
- **How To Use:** Clicking this link will launch a video demonstration of how to use Logon Screen Rotator.

Wallpaper:

These options are currently unavailable.

Updates:

Click the "Check For Updates" button and Logon Screen Rotator will connect to the internet to check if there is a newer version available. If there is the "Download Latest" button will become available, and you may click this to download the latest version. After the latest version is downloaded you will be prompted to install the new version.

Current Version will display the current version of Logon Screen Rotator you are running and when you have clicked "Check For Updates" the Latest Version will display the new version number.